



PD80-TO25-BL-2pin Series

Features:

- Low Voltage Operation
- Low Capacitance and High Speed with a PIN Structure
- Low Dark Current
- Excellent Stability

Applications:

- Digital and Analog Optical Communication
- Optical LAN
- OTDR

Specifications:

Absolute Maximum Ratings:

| Parameter | Symbol | Min. | Max. | Unit |
|--------------------------|-----------|------|------|------|
| Reverse Voltage | V_R | — | 20 | V |
| Forward Current | I_F | — | 10 | mA |
| Max. Optical Input Power | P_{MAX} | — | 10 | mW |
| Operating Temperature | T_{op} | -40 | +85 | °C |
| Storage Temperature | T_{stg} | -40 | +85 | °C |
| Lead Solder Temperature | — | — | 260 | °C |
| Lead Solder Time | — | — | 10 | s |

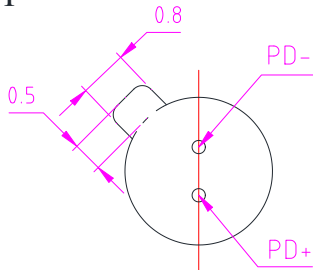
Characteristics: ($T_a=25^\circ\text{C}$ unless otherwise noted)

| Parameter | Symbol | Test Conditions | Min. | Typ. | Max. | Unit | |
|---------------------------------|------------|--|-----------------|------|------|---------------|-----|
| Active Diameter | D | — | — | 80 | — | μm | |
| Bandwidth | BW | $P_i=-10\text{dBm}$, Small signal modulation, $V_R=5\text{V}$ | — | 2.0 | — | GHz | |
| Responsivity | @1310nm | R | $V_R=5\text{V}$ | 0.8 | 0.9 | — | A/W |
| | @1550nm | R | $V_R=5\text{V}$ | 0.9 | 0.95 | — | A/W |
| Dark Current | I_D | $V_R=5\text{V}$ | — | 0.03 | 0.16 | nA | |
| Chip Capacitance | C_{chip} | $V_R=5\text{V}$, $f=1\text{MHz}$ | — | 0.65 | 0.8 | pF | |
| Optical Spectrum Response Range | λ | — | 1100 | — | 1650 | nm | |
| Operating Voltage | V | — | — | -5 | — | V | |

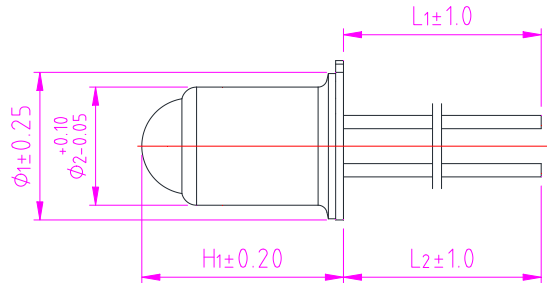


Mechanical Dimension and Pin Assignment:

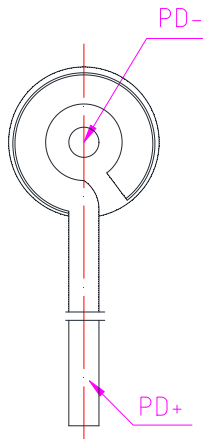
Type A



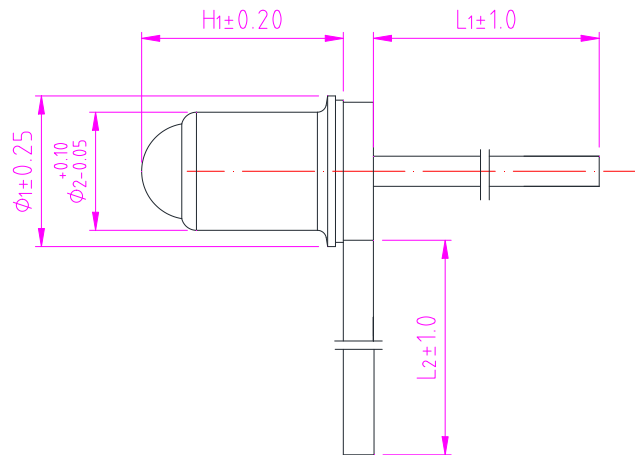
Bottom View



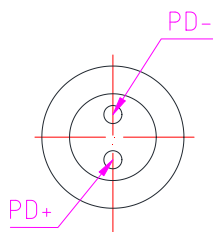
Type B



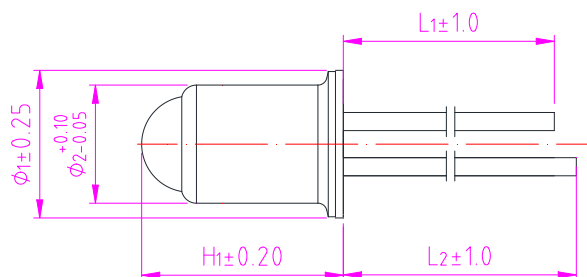
Bottom View



Type C



Bottom View



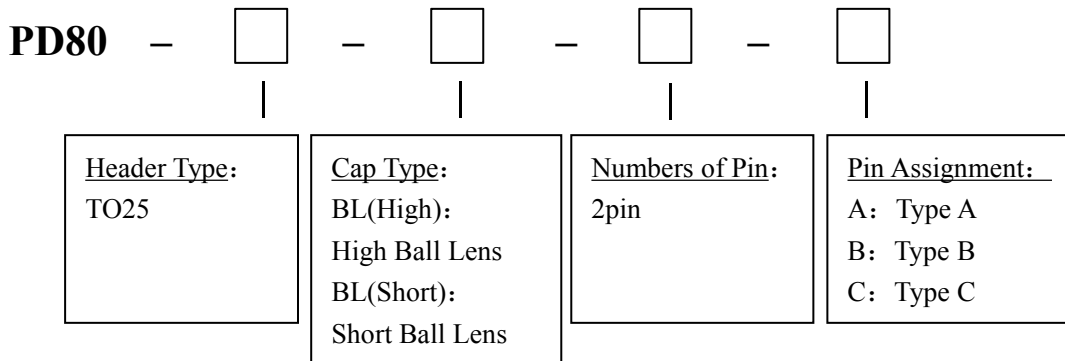


Standard Product List:

| Product name | Φ_1 (mm) | Φ_2 (mm) | H ₁ (mm) | L ₁ (mm) | L ₂ (mm) | Received light form |
|----------------------------|---------------|---------------|---------------------|---------------------|---------------------|---------------------|
| PD80-TO25-BL(High)-2pin-A | 2.5 | 1.96 | 3.35 | 12.7 | 12.7 | Divergent light |
| PD80-TO25-BL(High)-2pin-B | 2.5 | 1.96 | 3.35 | 14.0 | 14.0 | |
| PD80-TO25-BL(High)-2pin-C | 2.5 | 1.96 | 3.35 | 15.52 | 17.52 | |
| PD80-TO25-BL(Short)-2pin-A | 2.5 | 1.96 | 2.92 | 12.7 | 12.7 | Parallel light |
| PD80-TO25-BL(Short)-2pin-B | 2.5 | 1.96 | 2.92 | 14.0 | 14.0 | |
| PD80-TO25-BL(Short)-2pin-C | 2.5 | 1.96 | 2.92 | 15.52 | 17.52 | |

- Standard and custom designs to suit your systems.

Order Information:



Statement:

SAN-U owns the authority for final explanation of all information contained in this document, which is subject to change without notice. All the information was obtained in particular environments; and SAN-U will not be responsible for the performance of the customers' actual operating environments. All information contained is only for the users' reference and shall not be considered as warranted characteristics. SAN-U will not be liable for damages arising directly or indirectly which from any use of the information contained in this document.

Contact Information:

Address: N501-505 Weiye Bldg., Xiamen Pioneering Park For Overseas Chinese Scholars, Xiamen, Fujian, China

Tel: +86-592-3898601, 3898608, 5318000

Fax: +86-592-5703588

Email: sales@san-u.com

<http://www.san-u.com>